

# Khyber, Himalayan Resort & Spa Gulmarg, Now Open

After, Himalayan's first formally inaugurated by the Chief Minister. This much-awaited project breaks a new record by the fact that it has been a state-of-the-art project. The Khyber, Spa, Gulmarg, in an area of 1.25 acres, in a beautiful location, is a state-of-the-art project. The interior, clad in natural stone, offers a breath-taking view of the Aftawar peak or of the evergreen valleys. The interiors are designed with traditional motifs and showcase fine Kashmiri crafts. Nurmas of faded wool, silk carpets from local looms, furnishings embellished with crewel embroidery, carved walnut paneling, teakwood floors and papier-mache accents draw upon Kashmir's rich heritage of craftsmanship.

**Premier Rooms** (386 sq. ft.) with ceiling-height windows frame white peaks and sylvan valleys. Luxuriously furnished and decorated, these rooms are warm, welcoming spaces, designed to make you feel pampered.

**Luxury Balcony Rooms** (668 sq. ft.) with generous private balconies give you the space to sit and sip your morning tea as you catch the first rays of daybreak. Each room features a separate dressing area, leading to a plush bathroom with a sunken tub where large picture windows offer brilliant views.

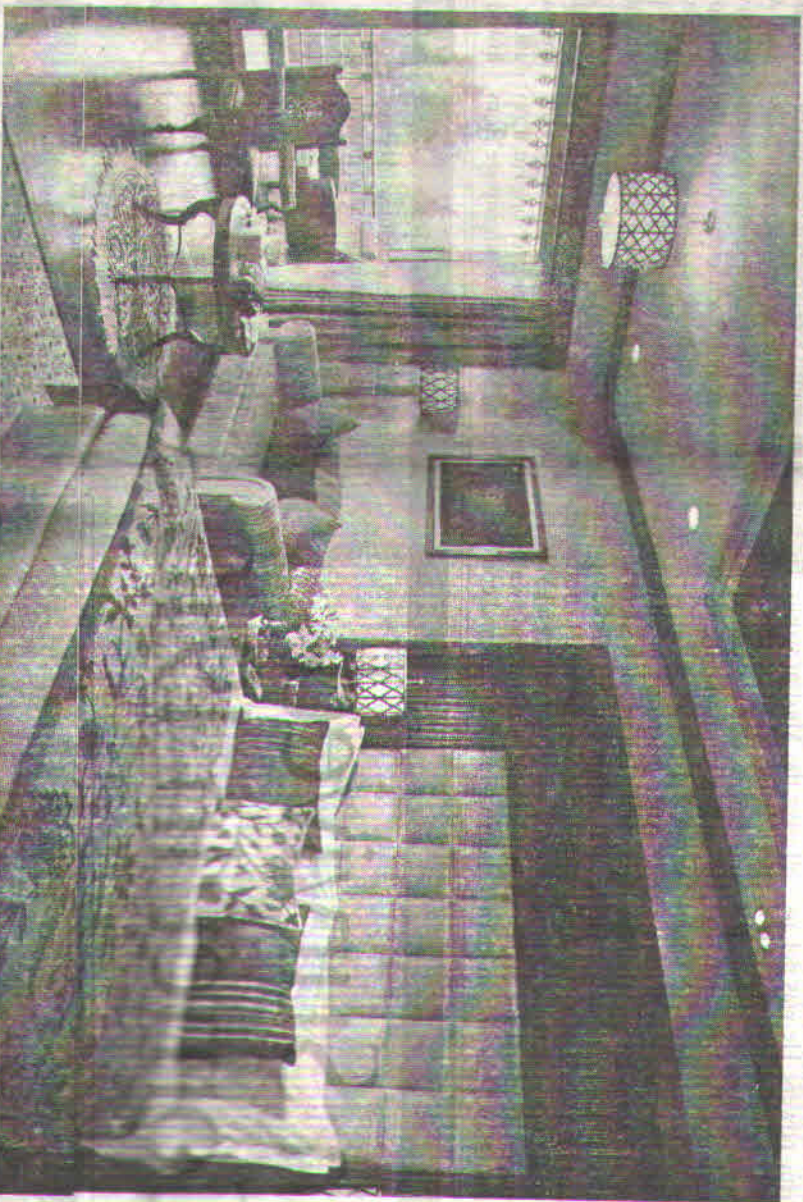
The resort also offers **Luxury Cottages** - One Bedroom (648 sq. ft.) and Two Bedroom (1296 sq. ft.). A covered walkway leads to these intimate, private hideaways. The one bedroom cottage has a living room and a spacious bathroom with a separate dressing room, sunken bathtub and wall-length picture window and a balcony that looks out to astounding mountain-scapes. The two-bedroom cottage has spacious bedrooms, en suite bathrooms with sunken bathtubs and picture windows, a sub-separate kitchen, a living room and a large balcony, which makes for a great place to sit and take in the drama of nature.

The **Presidential Cottage** (4227 sq. ft.) is a grand suite comprising a large master bedroom, two addi-

tional bedrooms each with a luxurious bathroom, a private heated plunge pool with a Jacuzzi, a living room, dining room, a full kitchen and a spacious private garden. The

enjoy your pasta, meze or din sum cravings, or try the Wazwan, the plentiful feast served at Kashmiri weddings. In an atmosphere that captures the grandeur of the moun-

Enjoy serene views, delectable finger food, and tea the way it is drunk in Kashmir and well beyond. The Tea Lounge opens on to a terrace which flows further down to a se-



**Luxury Balcony Room-The Khyber Himalayan Resort & Spa Gulmarg**

cottage offers superlative views of the Aftawar range and the verdant valley.

Guests at the resort will have ample choice of dining options. At Clives, travel the world of cuisines at this elegant restaurant where food from across the globe is served up with panoramic views. Sati-

lains

The Chalkash Tea Lounge named after the Kashmiri word for 'staked tea leaves, is a space as refined as the teas, coffees, tisanes and kahwah that may be enjoyed here. The Tea Lounge and Terrace is part elegant patisserie, part private club and wholly irresistible.

ries of cascading terraces, ideal for al fresco dining and mountain-gazing. An abundance of fire pits adds warmth and charm to every level.

At Calabash, the cigar and sheesha lounge, you may light up a Paragasé, a Montecristo® or any other coveted brand carefully selected for the humidor. There is

also an assortment of flavoured tobaccos in the sheesha. Calabash is a cosy nook in which to share your trekking tales and skiing stories and designed to encourage lounging for hours.

Now, the terrace restaurant offers spectacular views and is an ideal spot for guests to converge and relax over casual dining. In the evenings, the fragrance of pine from the forest mingles with aromas of freshly grilled meats, cooked just the way you like on traditional coal-fired barbecues. Now is ideal for catching a few rays by day, stargazing by night, reading, dozing or just partying with friends and family.

After a day of outdoor activity, skiing or sightseeing, guests can relax and rejuvenate at the world class Alaya Spa scheduled to open in the summer of 2013. With three single and two double treatment rooms, each with its own treatment room, Alaya Spa is a place to unwind and be pampered. The treatment rooms offer a variety of services from a relaxing massage to a rejuvenating facial and the amenities are experienced, certified therapists. There's also a visual treat for our spa-loving guests - stunning views from the picture windows of each treatment room. Adorning the Spa is a suite of the art gym with the latest equipment and an impressive heated indoor pool offering dramatic views of the mountain ranges.

The sprawling resort includes the beautifully landscaped Pardeez gardens and an amphitheatre, retail outlets, ski shop, and more than 10,000 square feet of meeting, banquet and event space.